

+98 913 326 6228

fattahibricks.com

فاتحي

TRADING COMPANY

FATAHI

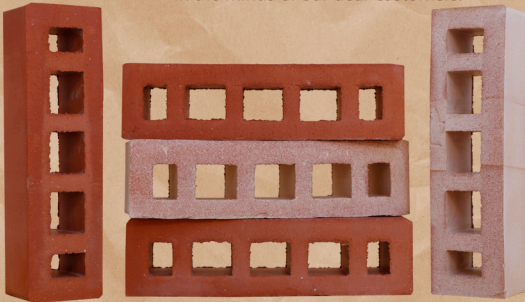
Bricks and clay

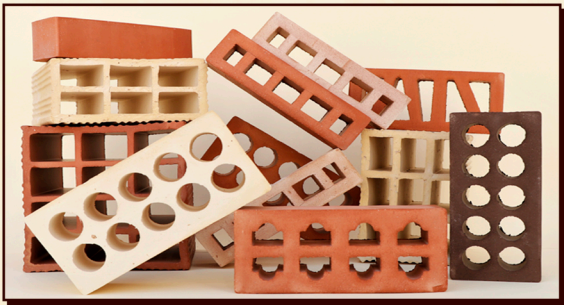




Getting to know Fatahi Trading Company:

Fattahi group of companies, with more than a quarter of a century of activity in the production of bricks with the latest technology in the world and with the aim of increasing the quantity and quality of the product, started its activities in the field of selling and exporting all kinds of clay and refractory bricks. Customer service is one of the main programs of our business, and based on this, all our efforts to achieve customer satisfaction and a good shopping experience are in the minds of our dear customers.





Types of clay bricks and their uses

Blade clay brick

Foamed clay brick

firebrick (facade)

Types of clay bricks in terms of color and material

Brick with clay

Brick with clay is composed of a combination of minerals such as silicon oxide, iron oxide, aluminum oxide, etc., which has a yellow color and can have a good level of quality and baking.

Brick with shale soil

Shale soil is a kind of milled sedimentary rock with the mineral composition of clay, quartz, calcite,... which produces a strong brick with high compressive strength.

Types of bricks in terms of quality

Second grade clay brick

This type of brick is more suitable for internal building use

First grade clay brick

Even though the first-class bricks are not of the high quality of the special clay bricks, they still have good resistance in the facade of the building.



special clay brick (excellent)

The high resistance and strength of the special clay brick (excellent) especially against frost and cold has made it a suitable option for use in the flooring of sidewalks, sewage canals, etc.

First-class and premium clay bricks have more precise dimensions and have a lower weight than second-class clay bricks with the same dimensions. Therefore, in places where the discussion of building style is important, it is suggested to use first-class and premium bricks.



Brick dimensions in different types

Dimensions of clay bricks (blade)

The first type of clay brick is known as blade, which is mainly composed of clay, shale and lime and is used in production.

The production steps of this product are that after preparing the dough, molding and claying, it is baked in a brick kiln at a temperature of 900 degrees Celsius.

Today, the most used dimensions in the process of brick and pottery production are 5.5, 7, 8, 10, 12, 15, 20 and 25 cm.

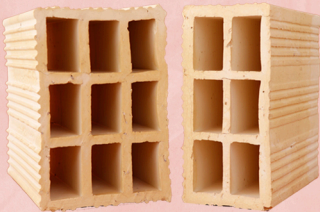


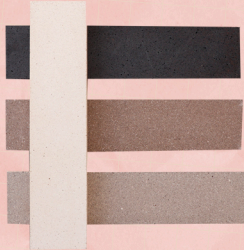
Small clay bricks with sizes of 5.5, 7 and 8 cm, which are mostly used in spaces such as the sides of elevators, staircases, sides of doors, etc., their thickness is low and as a separator in thin internal walls of the building with a price. It is economical and affordable.

Medium clay bricks, including 10 and 12 cm bricks that are suitable for the internal walls of buildings and rooms, and the products weigh between 2 and 3 kg in the first grade type and are somewhat heat and sound insulated, and thus are considered high-quality building materials.

Large clay brick, the best seller, is 15 cm in size, which is suitable for both types of internal and external walls due to our size between small and large bricks. The weight of the 15 cm clay brick is light and it performs well in reducing the additional load of the building

Also, if you want to buy a product with high sound and heat insulation power, 15, 20 and 25 cm bricks have high resistance due to their greater thickness.





Foamed clay brick

Foamed clay brick is an excellent option with light weight to maintain safety with high strength and suitable insulation in building walls. Foamed models are also sold in the market under the name of insulated brick, unolite blade or foamed blade.

Foamed clay bricks are the second type of clay bricks, which have a much more suitable performance in construction due to their insulating design, having internal holes and grooves. The grooves on the foamed clay bricks help the better adhesion of the mortar and the bricks and in this way bring higher strength.

Also, the dimensions of foamed clay bricks are very diverse and the most widely used ones are 10*20, 15*20*20, 10*25*20, 15*20*20.

To calculate the number of bricks needed for the project in relation to the dimensions of the clay brick, the following equation can be used.

Wall thickness x height x length = wall volume

Wall volume x 0.8 = brick volume

(volume of one brick or clay) / (volume of brick) = number of bricks or clay firebrick (facade)

Firebrick is one of the most widely used materials with a reasonable price for designing and implementing the facade of buildings and making furnaces. Of course, this brick is also used in the interior.



The types of firebricks (facing) are:

English firebrick

Chamoti refractory brick

Black refractory brick

White refractory brick

Samir firebrick

Insulation refractory brick

Furnace firebricks (alumina, silica, magnesite chrome, spinel, etc.)

There are different types of refractory bricks and each of them has different sub-sets and codes.

The types of refractory bricks (facade) are: plaque brick, L, tile, cut, carpet floor, shutter, antique

Refractory brick (facade) is produced in different colors such as yellow, red, brown, black, white, silver, etc.

The formula for the number of firebricks in one square meter:

$[(\text{brick length} + \text{strapping width}) * (\text{brick width} + \text{strapping width})] \div 10000$



+98 913 326 6228



fattahibricks.com